

SlimShield Signature Pad

A Hygiene-focused Solution
for Modern Environments



Scriptel Corporation
2222 Dividend Drive
Columbus, Ohio 43228 USA

PHONE: 877.848.6824

Scriptel
CORPORATION

Documentation from Pen to Pixel

URL: <https://scriptel.com>

SlimShield Signature Pad

A Hygiene-focused Solution for Modern Environments

Maintaining cleanliness and hygiene in shared spaces has become more critical than ever.

Industries like healthcare, retail, hospitality, and public services demand tools that not only perform their primary functions but also help mitigate the spread of germs and disease. Addressing this need, Scriptel's SlimShield Signature Pad offers an innovative and practical solution. With its compatibility with Clorox cleaning products, SlimShield stands out as a disinfectable, durable, and reliable device designed for environments where hygiene is paramount.



Key Features



Clorox-Compatible Materials

The SlimShield Signature Pad is uniquely crafted to withstand rigorous cleaning using Clorox cleaning products. This includes:

Signature Pad Housing: Designed with durable materials that resist wear and discoloration from Clorox chemicals.

Stylus Pen: The included stylus is made of Clorox-compatible materials, ensuring thorough disinfections after every use.

Cabling: Even the connecting cable is manufactured to endure exposure to Clorox cleaners, maintaining its integrity and cleanliness.

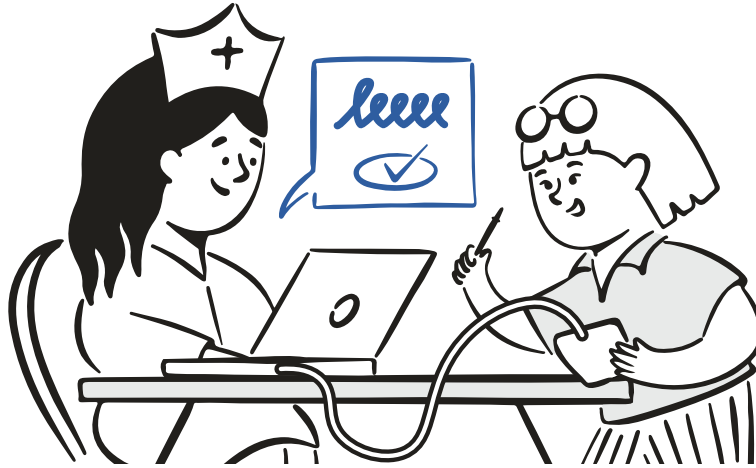


White Housing, Stylus, and Cable

The SlimShield Signature Pad features an all-white design, including housing, stylus pen, and cabling. This design serves both aesthetic and practical purposes.

Enhanced Cleanliness Visibility: The white materials allow users to easily identify dirt or residue, ensuring the pad is thoroughly cleaned and disinfected.

Aesthetic Appeal: The clean and modern white finish compliments professional environments, particularly in healthcare and other sterile settings.



Durability and Reliability

The SlimShield is built to last, even in demanding environments where frequent cleaning and high usage are required. Its durable construction ensures:

Longevity: Resistant to chemical damage and wear from daily use.

Consistent Performance: Delivers reliable functionality without degradation over time.

Ease of Use

Designed with the user in mind, the SlimShield offers:

Plug-and-Play Setup: Simple integration with existing systems.

Compact Design: Slim and lightweight, making it easy to handle and position in any workspace.

Benefits



Improve Hygiene

Ensures a clean and safe environment, reducing the risk of germ transmission.



Compliance with Cleaning Products

Meet stringent cleaning requirements in industries like healthcare and food service.



Enhanced User Confidence

The ability to visibly inspect the pad for cleanliness builds trust among users.

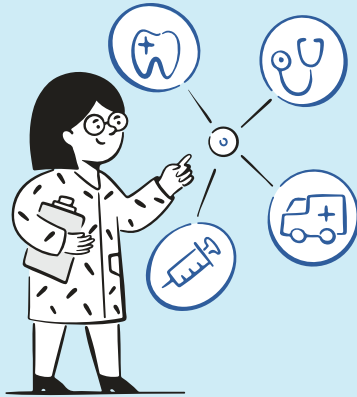


Cost-Effectiveness

Durable materials reduce the need for frequent replacements, offering long-term value.

SlimShield Signature Pad Applications

The SlimShield Signature Pad is ideal for use in:



Healthcare Settings

Hospitals, clinics, and pharmacies where cleanliness is critical

Food Service Industry

Restaurants and food products facilities requiring a hygienic environment



Retail and Hospitality

High-traffic environments where shared devices are common

Corporate Offices

Enhances hygiene in shared workspaces and meeting rooms



The Scriptel SlimShield Signature Pad is the premier choice for businesses and organizations prioritizing hygiene and durability. Its Clorox-compatible design, coupled with its all-white aesthetic for cleanliness visibility, makes it a standout solution for critical environments.

By choosing SlimShield, you ensure safety, reliability, and a professional appearance, all in one compact device.

For more information, visit [Scriptel.com](https://scriptel.com).

Scriptel[®]
CORPORATION

Documentation from Pen to Pixel

2222 Dividend Drive
Columbus, Ohio 43228 USA

<https://scriptel.com>

PHONE: **877.848.6824**

EMAIL: info@scriptel.com

HOURS: Mon-Fri 8am-5pm ET